

# PRIMARY SEVEN EXAMINATIONS TERM III 2022

## PRE-PLE PAPER SET SEVEN

### INTEGRATED SCIENCE

Time allowed: 2 hours 15 minutes

Index No:

Random No.						Personal No.		

Name: \_\_\_\_\_ Stream: \_\_\_\_\_

#### Read the following instructions carefully:

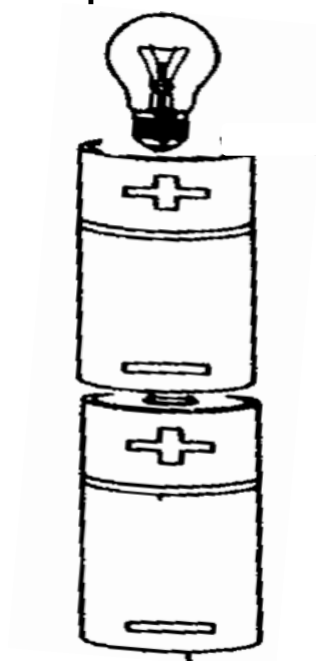
1. This paper has **two** sections: **A** and **B**.  
Section A has 40 questions and section B has 15 questions.
2. Answer all questions. All answers to both section A and B  
Must be written in the spaces provided.
3. All answers must be written using a blue or black ball-point  
pen or ink. Any work written in pencil will not be marked.
4. Unnecessary changes of work may lead to loss of marks.
5. Any handwriting that cannot easily be read may lead to loss  
of marks
6. Do not fill anything in the boxes indicated:

FOR EXAMINER'S USE ONLY		
Qn. No	MARK	EXR'S NO
1 – 5		
6 – 10		
11 - 15		
16 – 20		
21 - 22		
23 – 24		
25 – 26		
27 – 28		
29 – 30		
31 - 32		
Total		

## **SECTION A**

1. Write any one disease of the human eye  
\_\_\_\_\_
2. In which way does regular weeding control pests in the garden?  
\_\_\_\_\_
3. Name the body organ responsible for making poisonous substance harmless  
\_\_\_\_\_
4. Identify any one danger of teenage pregnancy  
\_\_\_\_\_

**The diagram below shows a simple circuit. Use it to answer questions 5 and 6**



5. Use an arrow to show the flow of electrons.  
\_\_\_\_\_
6. What energy change takes place in a working electric bulb?  
\_\_\_\_\_
7. Where in mammals does implantation take place?  
\_\_\_\_\_
8. Outline any one way of improving the efficiency of a wedge  
\_\_\_\_\_
9. Which effect of heat on matter enables mercury in a thermometer to show temperature?  
\_\_\_\_\_

10. Name any one item used in the control of COVID-19

---

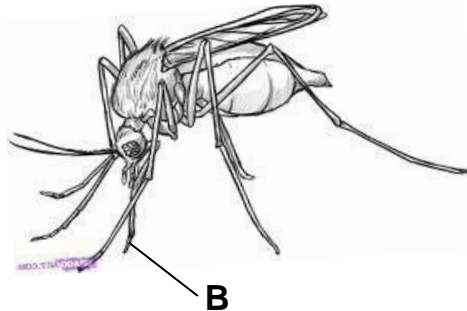
11. How are testes similar to anthers in terms of function?

---

12. In which do people reduce on the effect of echoes in a cinema hall?

---

**The diagram below shows a mosquito. Use it to answer questions 13 and 14.**



13. Identify the disease spread by the mosquito shown in the diagram above.

---

14. How is part B useful to the organism above?

---

15. Which property of magnets enables pilots to locate direction using compass needles?

---

16. How is a queen bee able to lay fertilized eggs for a longer time without mating?

---

17. Why is soaking of clothes important in laundry?

---

18. Why does expired air contain more carbon dioxide and water?

---

19. Give any one characteristic of dairy breeds of cattle

---

20. Give any one part of the human body where flat bones are found

---

21. Which common vector produces already hatched eggs?

---

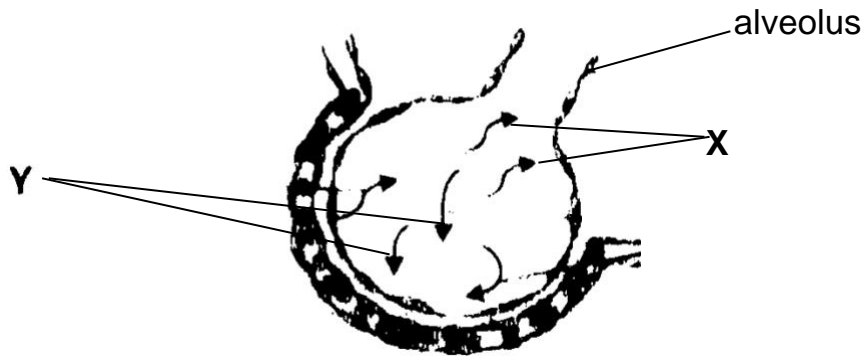
22. Give one way people make use of non-biodegradable wastes in the environment

---

23. Identify any one factor that can lead to drug abuse.

---

**The diagram below shows gaseous exchange in the air sac. Use it to answer questions 24 and 25**



24. Identify the gas represented by the arrows marked X above.

---

25. By what process does gas Y enter into the air sac?

---

26. Name the gas produced by a candle when burning.

---

27. Which part of a human body acts as a second class lever?

---

28. Name any one characteristic that makes mammals different from other vertebrates

---

29. What role is played by cold water during the process of distillation?

---

30. Identify the component of blood that forms the immunity of the body

---

31. State one difference in function between a tendon and a ligament

---

---

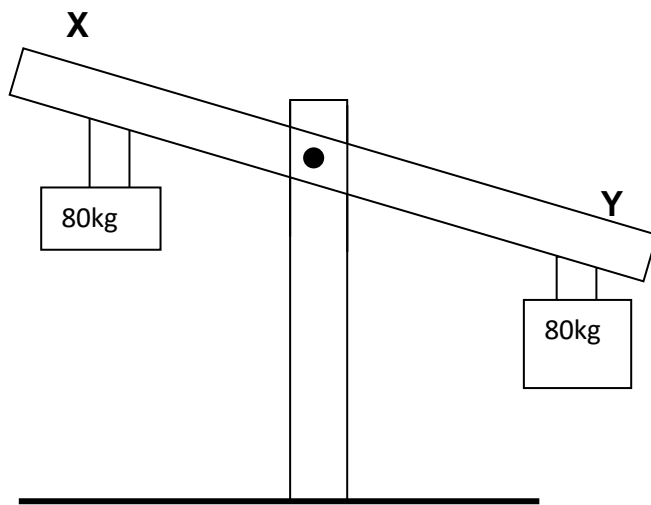
32. Convert  $20^{\circ}\text{C}$  to  $^{\circ}\text{F}$

---

33. Give one way of conserving wood fuel

---

**The diagram below shows a simple machine. Use it to answer questions 34 and 35**



34. Name the simple machine shown above.

---

35. State the reason why X and Y failed to balance yet they are of the same mass?

---

36. Why is the filament of a bulb coiled?

---

37. In one sentence, explain the effect of opaque objects in the path of light

---

38. Which component of the environment helps in flying kites?

---

39. Give any one process where chemical energy is converted into heat energy

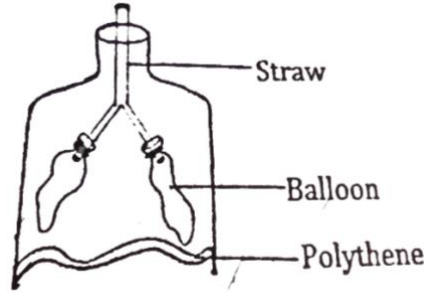
---

40. Which vaccine is given against tetanus in adults?

---

## SECTION B

41. The diagram below shows a model of a body system. Study it carefully and use it to answer questions that follow



- a) Name the body system represented by the model above

\_\_\_\_\_

- b) What do the following parts represent;

i) balloons \_\_\_\_\_

ii) polythene \_\_\_\_\_

- c) What will happen to the polythene when air is blown into the balloons?

\_\_\_\_\_

42. a) Give any one important information that can be got from a child health card.

\_\_\_\_\_

- b) How can a school nurse tell whether a P.2 child is already immunized against tuberculosis?

\_\_\_\_\_

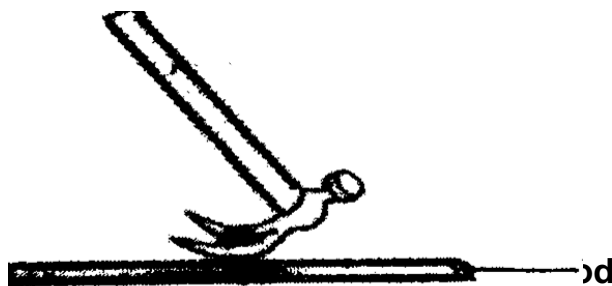
- c) Name the disease whose vaccine is administered at 36 weeks.

\_\_\_\_\_

- d) State one importance of immunization to the a baby.

\_\_\_\_\_

43. The diagram below shows a simple machine. Use it to answer questions that follow



a) To which class of levers does the machine above belong?

\_\_\_\_\_

b) Name two other machines in the class of levers mentioned above

i) \_\_\_\_\_

ii) \_\_\_\_\_

c) Use an arrow and letter E to show the direction of effort when the above machine is being used

44. a) Name one structure that covers the body of a bird.

\_\_\_\_\_

b) What is the importance of such structures to the bird?

\_\_\_\_\_

c) Name two exotic breeds of chicken reared in Uganda

i) \_\_\_\_\_

ii) \_\_\_\_\_

45. a) Name the highest clouds in the sky.

\_\_\_\_\_

b) By what process are clouds formed?

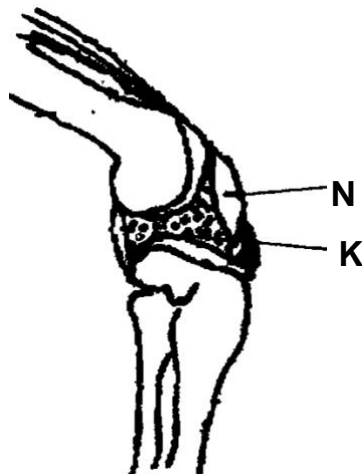
\_\_\_\_\_

c) Give two ways in which clouds are important to people.

i) \_\_\_\_\_

ii) \_\_\_\_\_

46. The diagram below shows part of the human skeleton. Use it to answer questions that follow



a) Name the bone marked N\_\_\_\_\_

b) State the function of the fluid labelled K.

\_\_\_\_\_

c) State the movement made by the joint shown above

\_\_\_\_\_

d) Name one other part of the body with the same type of joint

\_\_\_\_\_

47. a) Name the germ that causes AIDS.

\_\_\_\_\_

b) How does the AIDS causing germ destroy the immunity of the body?

\_\_\_\_\_

c) Give two ways of improving the immunity of a person suffering from AIDS

i) \_\_\_\_\_

ii) \_\_\_\_\_

48. a) What first aid can you give to someone with a foreign body in the;

i) eyes\_\_\_\_\_

ii) ear\_\_\_\_\_

b) State one reason why casualties are given first aid.

\_\_\_\_\_

c) Give one way a first aider can prevent contracting infections from the casualty when giving aid.

\_\_\_\_\_

49. a) How does a concave lens affect a parallel beam of light?

\_\_\_\_\_

b) Write two characteristics of images formed by a pinhole camera.

i) \_\_\_\_\_

ii) \_\_\_\_\_

c) How can the image formed on the screen of a pinhole camera be made sharper?

\_\_\_\_\_



50. Match the vaccines to the diseases they prevent correctly

vaccine	Disease
Sabin	Whooping cough
HPV	Polio
DPT	Pneumonia
PCV	Cervical cancer

**Correct order**

- a. Sabin vaccine \_\_\_\_\_
- b. HPV vaccine \_\_\_\_\_
- c. DPT vaccine \_\_\_\_\_
- d. PCV vaccine \_\_\_\_\_

51. a) What are involuntary muscles?

\_\_\_\_\_

- b) Give one example of a skeletal muscle

\_\_\_\_\_

- c) How are muscles useful in the human body?

\_\_\_\_\_

- d) Identify one injury that might affect the proper working of the skeletal muscular system.

\_\_\_\_\_

52. a) Which type of digestion is carried out by enzymes?

\_\_\_\_\_

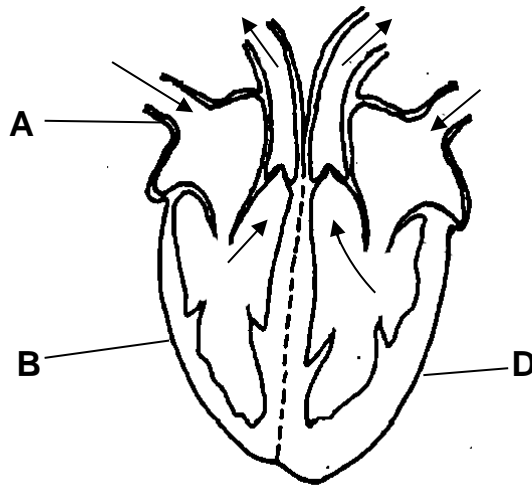
- b) Name the digestive juice that breaks down fats into tiny droplets in the duodenum

\_\_\_\_\_

- c) Why are fats not digested in the stomach?

\_\_\_\_\_

53. The diagram below shows a human heart. Use it to answer questions that follow



a) What type of blood is carried by blood vessel **A**?

---

b) Why is part **D** of the heart thick walled?

---

c) Through which chamber does oxygenated blood enter the heart?

---

d) Why are valves important to the heart?

---

54. a) Apart from land, mention two other requirements for starting a livestock farm.

i) \_\_\_\_\_

ii) \_\_\_\_\_

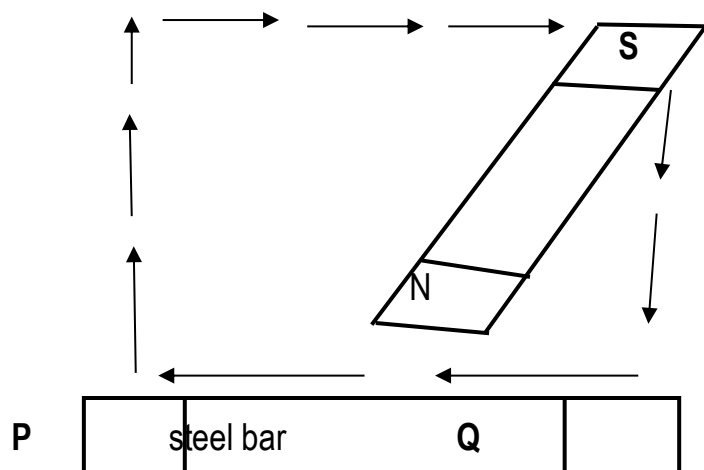
b) Give any one way animal keeping can be made possible on a small piece of land

---

c) State one way land for farming can be acquired

---

55. The diagram below shows a method of making magnets. Use it to answer questions that follow



a) Name the method of making magnets shown above.

\_\_\_\_\_

b) What does pole Q become after magnetization?

\_\_\_\_\_

c) Write two other methods of making magnets apart from the above.

i) \_\_\_\_\_

ii) \_\_\_\_\_

**END**